

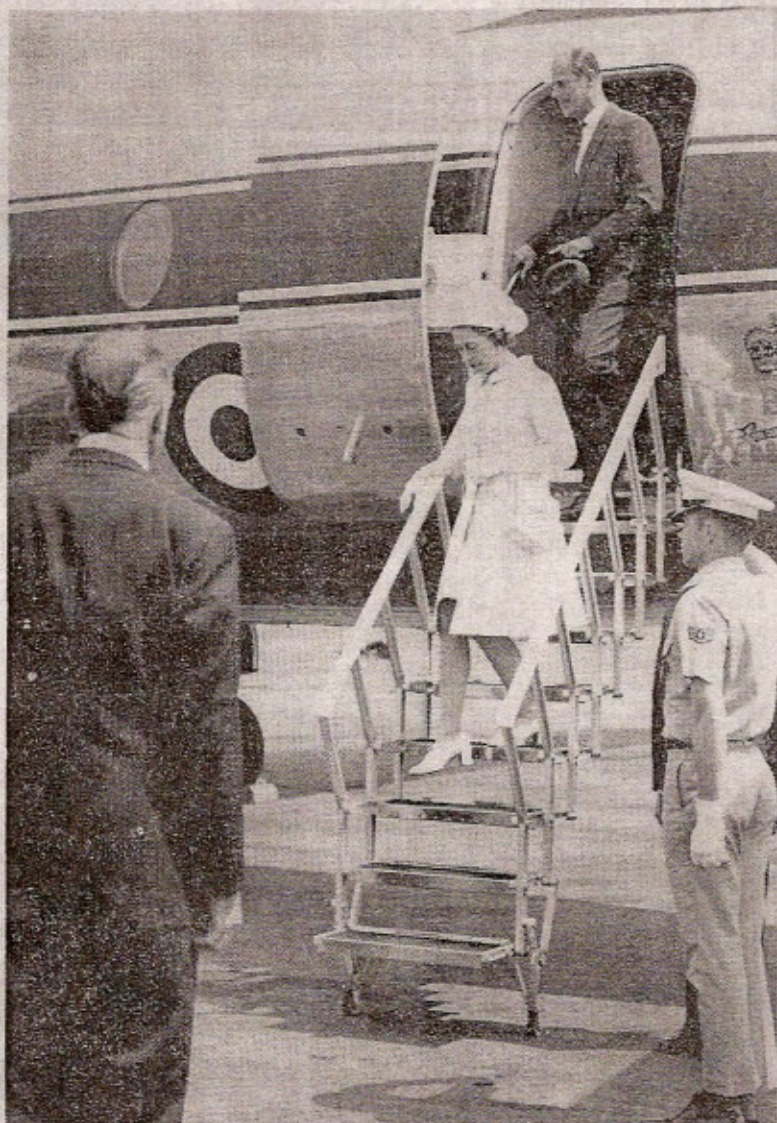
Ipswich,
Friday,
June 5, 1970
No 25,881
Price 6d.

Evening Star

MAIN
TOWN

CROYDON'S
WEDING RING
Croydons

TAVERN STREET : IPSWICH
34 Cornhill, Bury St. Edmunds



PM lashed in pay row

● The Queen and the Duke of Edinburgh arrive at Bentwaters on their way to Snape Maltings. The Lord Lieutenant of Suffolk, the Earl of Stradbroke (left), officially met the Royal party.

£ $\frac{1}{2}$ m. to

Queen gets big Suffolk welcome

CHEERING crowds of American schoolchildren greeted the Queen and Prince Philip when they flew into RAF Bentwaters today on their visit to Snape Maltings.

The Queen, wearing a light blue coat and blue and white hat, stepped from an aircraft of the Queen's Flight to be greeted by officers of RAF Bentwaters, and by the Lord Lieutenant of Suffolk, the Earl of Stradbroke.

USAF officers included commanding officer Col. John Barthol, base commander Col. Philip Safford, and deputy commander for operations, Col. James Enos.

Prince Philip chatted with the officers for some minutes before he and the Queen left in a maroon Rolls Royce for Sternfield House, home of Lieut.-Col. Eric Penn.

STRICT SECURITY

Strict security measures were in force at the base. Chief Constable of the Suffolk Constabulary, Mr. Arthur Burns, and top policemen, including Det. Chief Supt. Tom Turling, head of Suffolk CID, stood by.

After lunch at Sternfield House, the Royal party were due to leave for the rebuilt Maltings, to arrive for a concert at 5 p.m.

Those taking part in the concert include Heather Harper, Peter Pears, John Shirley-Quirk, the Aldeburgh Festival Singers and the English Chamber Orchestra.

PRESENTATION

Conductors were Benjamin Britten, Imogen Holst and Philip Ledger. At the end of the concert, at 4.10 p.m., the Queen and Duke were to go to the restaurant, where a number of Aldeburgh people associated with the rebuilding of the hall were to be presented to them.

The Queen leaves for Bentwaters at 4.25 p.m.